

## Contents

1	System Requirements.....	2
2	Obtaining ediTariff.....	3
2.1	Download the CD image .....	3
2.2	Request a DVD .....	4
3	Integrating ediTariff with CargoWise One.....	5
3.1	Why integrate? .....	5
3.2	How to Install ediTariff.....	5
4	Configuring CargoWise One to use ediTariff.....	8
5	Installing ediTariff without integration (Standalone Version) .....	10
6	Installation of Additional Components .....	12
6.1	Installation of ediTariff Search Component.....	12
6.2	Installation of Microsoft .NET Framework v.2.0 .....	15
7	Using Folder Browser .....	16
8	Solving Common Problems .....	17



## 1 System Requirements

The minimum system requirements for ediTariff are:

- Pentium® 233-MHz processor or faster
- DVD-ROM drive (for CD-based installation)
- Broadband Internet (required for product updates)
- At least 64 MB of RAM
- At least 1.5 GB of disk space (additional space may be required for future data files)
- Windows XP, Vista, Windows 7 or 8 operating system with latest service packs installed

Running ediTariff on a system that doesn't meet these requirements is not recommended.

## 2 Obtaining ediTariff

### 2.1 Download the CD image

The ediTariff CD images are available for download and installation from the WiseTech Global website.

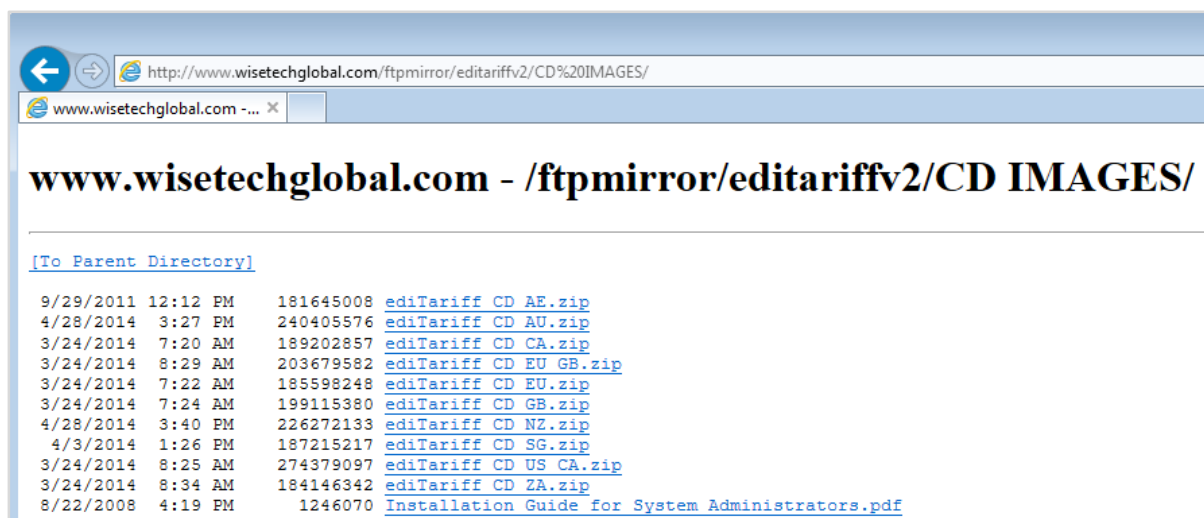
*Please note that CD images are large files (200+ MB) – so a fast Internet connection is required to download them.*

CD images are country-specific (e.g. only contain data for a given country) so are smaller in size and compressed into a zip archive.

To install ediTariff from a CD image:

- Navigate to the webpage that provides access to the ediTariff CD images:  
<http://www.wisotechglobal.com/ftpmirror/editariffv2/CD%20IMAGES/>
- Each CD image has a filename that contains a country code to indicate which country it supports:

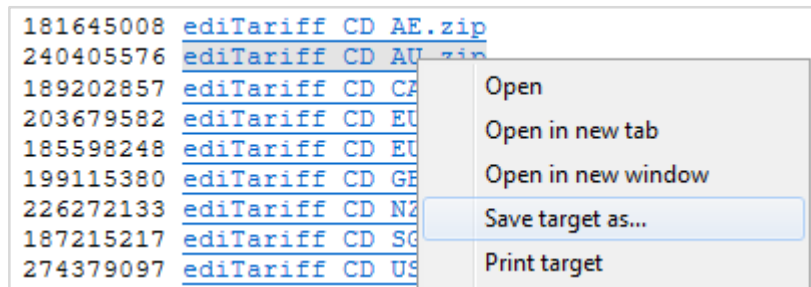
Code	Description
AE	Dubai only
AU	Australia only
EU_GB	Europe and United Kingdom
EU	Europe
NZ	New Zealand only
SG	Singapore only
US_CA	U.S. and Canada
ZA	South Africa only



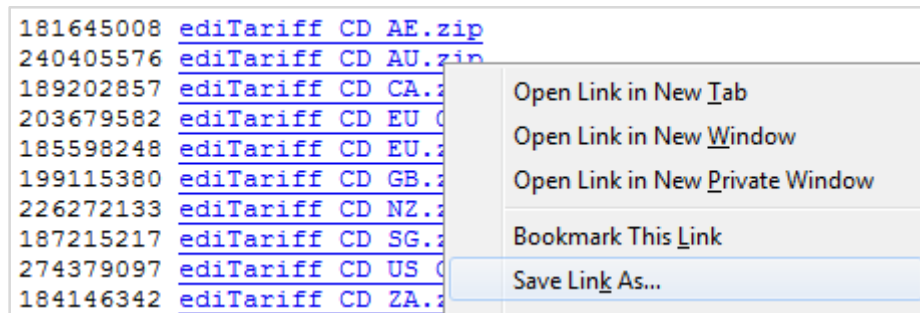
*Note: As the list is being updated from time to time, your actual display might be slightly different*

from the screenshot example above.

- Download the CD image relevant to your country and save it to your local drive.
- For **Internet Explorer**, right-click the image of your choice, select **Save Target As...** and choose a local folder to save the image. Then click the **Save** button.



- For **Mozilla Firefox**, right-click the image of your choice, select **Save Link As...** and choose a local folder to save the image. Then click the **Save** button.



- Unzip the contents to a temporary folder, for example **c:\tmp**.
- Open the folder and run the file named **install.exe**.

The rest is no different from a DVD-based installation and all instructions contained herein are fully applicable to an installation started from a local folder.

*Please note that web-based CD images might not contain the latest release of ediTariff. Make sure you always run ediTariff updates after you've completed the installation.*

## 2.2 Request a DVD

If downloading of the CD Image is not possible, the ediTariff installation kit is available on DVD media which will be distributed upon request by WiseTech Global offices.

### 3 Integrating ediTariff with CargoWise One

#### 3.1 Why integrate?

Integration of ediTariff with **CargoWise One** provides the facility to:

- Open ediTariff directly from **CargoWise One** screens wherever a tariff item needs to be inserted (such as “Invoice Lines” within the Customs module)
- Use ediTariff’s search engine to find an appropriate classification and post it back to **CargoWise One**.

#### 3.2 How to Install ediTariff

Depending on whether you are using a DVD or CD image the installation starts differently:

- If using a DVD, insert the ediTariff disk into the DVD drive. The installation should start automatically.

*Please allow half a minute for the installation to start up (check the LED indicator on your DVD drive for disk activity). If nothing happens, open **My Computer**, navigate to the DVD drive and run **install.exe**.*

- If using a CD image, open the folder where you unzipped the image (for instance, in c:\tmp) and run file named **install.exe**.

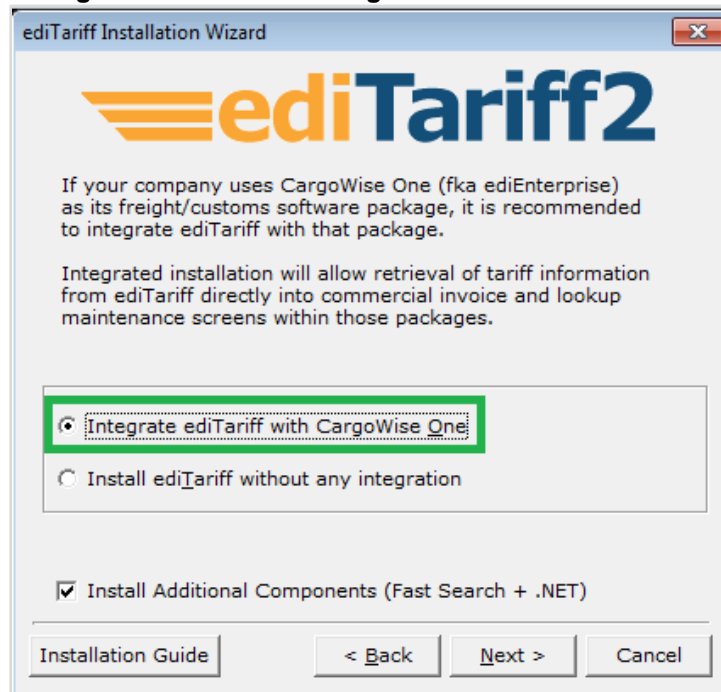
The **ediTariff Installation Wizard** will appear to assist with installation. Follow the steps in this Wizard to install:



*It is recommended that the **Install Additional Components** checkbox is ticked to enable faster searches. Refer to the [Installation of ediTariff Additional Components](#) section of this Guide for more details.*

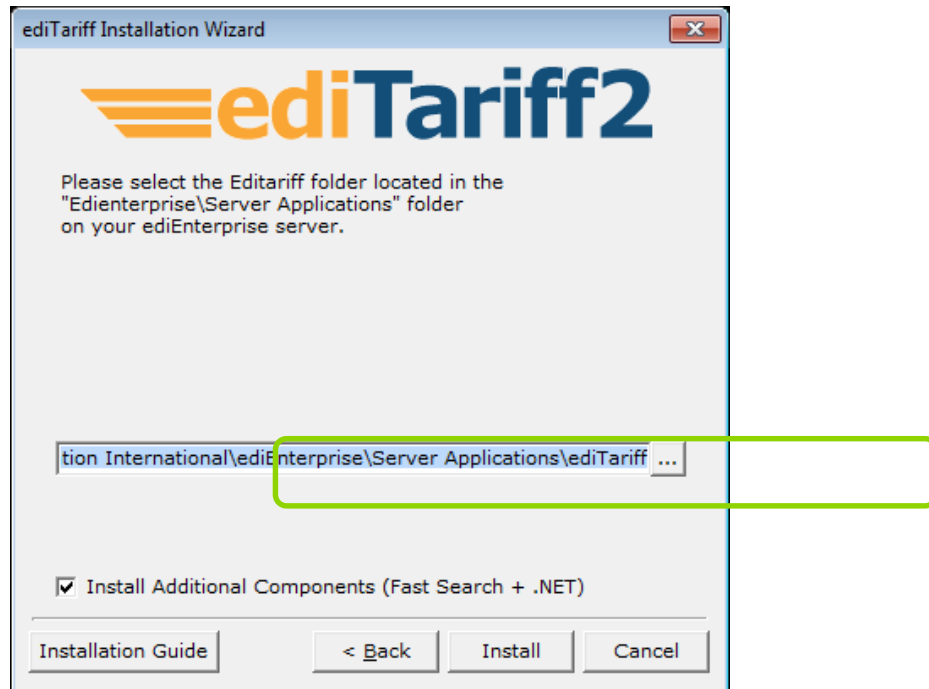
To continue with the installation, click **Next**.

On this screen select **Integrate ediTariff with CargoWise One** and click **Next**.



On this screen, the path entered identifies where ediTariff is to be installed. A possible location of **CargoWise One** will automatically default here and it is generally recommended to accept the default path. However, any other location may be entered.

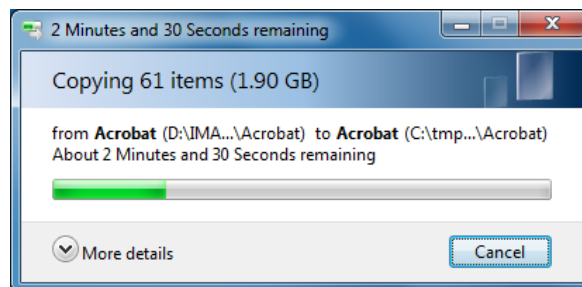
For example, **CargoWise One** is installed to `\\myserver\enterprise` so in the box provided, type in the following path: `\\myserver\enterprise\Server Applications\ediTariff`



Alternatively click the Browse  button to search for the folder from an Explorer-like dialog box.

*Refer to the section named [Using Folder Browser](#) within this Guide for further details.*

Once you have nominated the path, click *Install* and the installation will begin.



*Note: Depending on your system, the file copy process might take up to five to ten minutes to complete.*

If you selected the checkbox to install additional components, that installation will begin right after the file copy has completed.

*Refer to the section named [Installation of Additional Components](#) within this Guide for further details.*

When the screen below appears, finalize the ediTariff installation by clicking *Finish*.

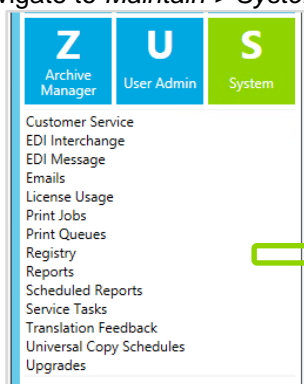


## 4 Configuring CargoWise One to use ediTariff

Once **ediTariff** has been installed, **CargoWise One** can be configured to use **ediTariff** for tariff lookups within the Registry.

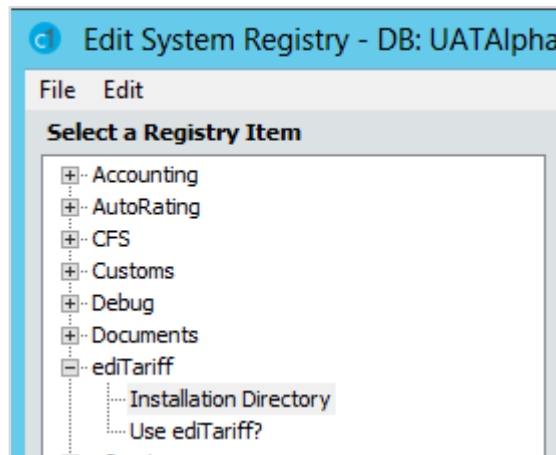
*Note: Check the correct security permissions are enabled to edit the Registry.*

1. Log into **CargoWise One** and navigate to *Maintain > System > Registry*

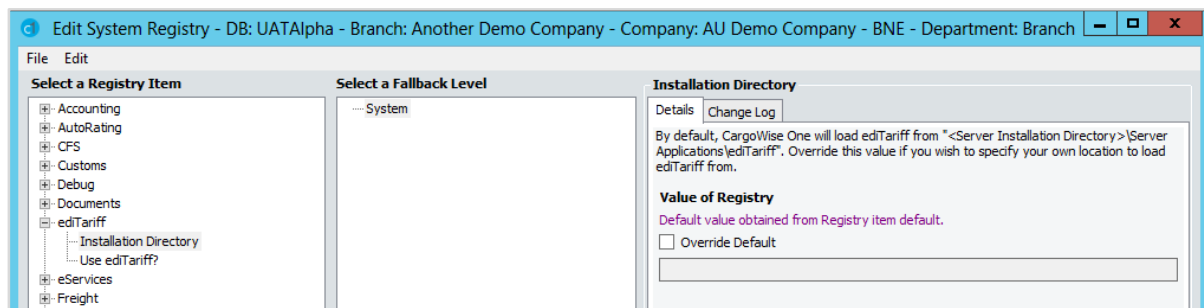




- When the Registry opens, expand **ediTariff** by clicking on the “+” icon.



- Select **Installation Directory** – this Registry records the location where ediTariff is installed.

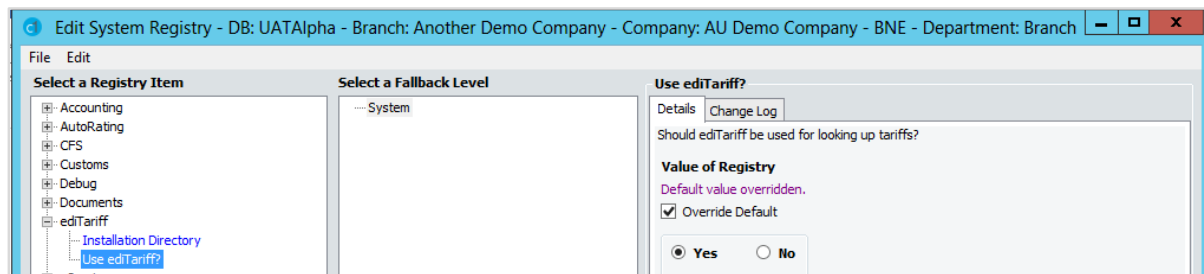


Check the box to **Overwrite Default** and enter the path to the folder where ediTariff is installed.

*Note: This is the same path used in Step 3 of **Integrating ediTariff with CargoWise One**.*

- Select **Use ediTariff** – this Registry allows you to allow or disallow the use of ediTariff to look up tariffs.

Check the box to **Overwrite Default** and select **Yes**



## 5 Installing ediTariff without integration (Standalone Version)

ediTariff may be installed as a standalone application (so it is not integrated with any other WiseTech Global products).

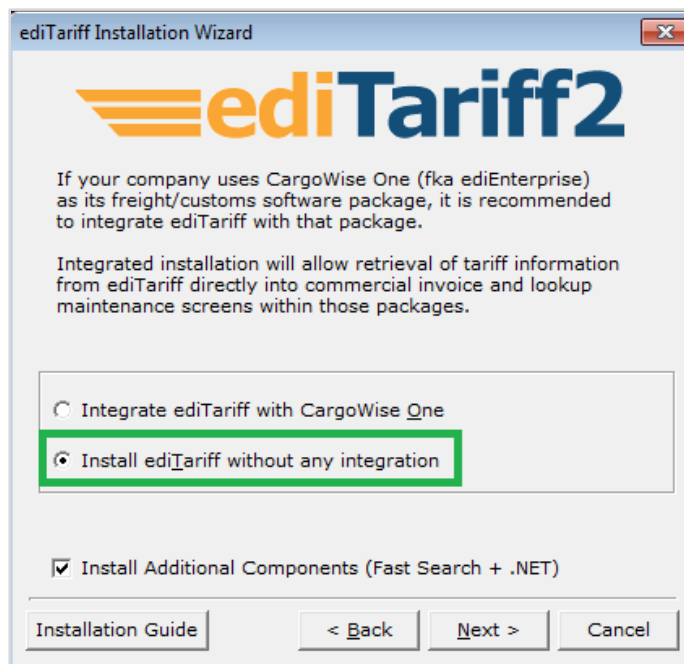
*If this option is chosen, integration with CargoWise One may be enabled at any time. Refer to the [How To Troubleshoot ediTariff Errors](#) document, section named [Error! Reference source not found](#) for more details.*

- If using a DVD, insert the ediTariff disk into the DVD drive. The installation should start automatically.

*Please allow half a minute for the installation to start up (check the LED indicator on your DVD drive for disk activity). If nothing happens, open **My Computer**, navigate to your DVD drive and run **install.exe**.*

- If using a CD image, open the folder where you unzipped the image (for instance, in c:\tmp) and run file named **install.exe**.

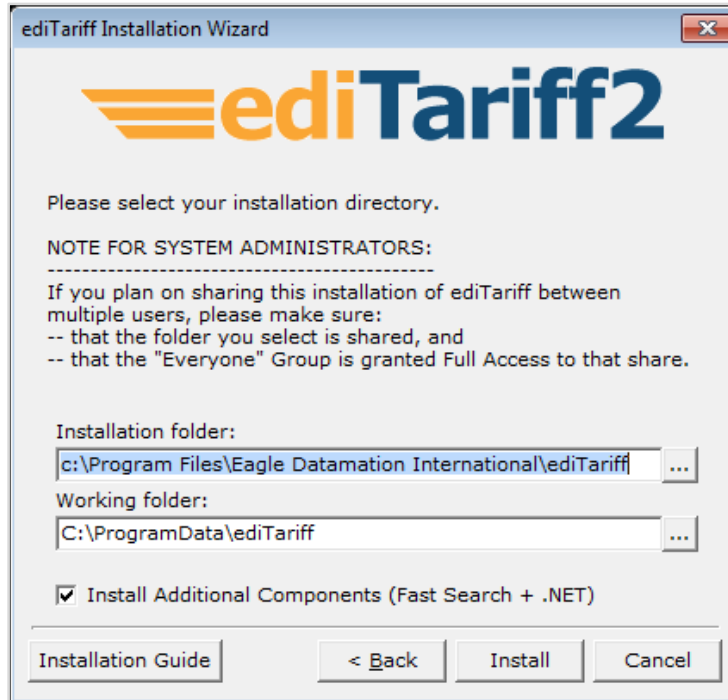
The **ediTariff Installation Wizard** will appear to assist with installation. Follow the steps in this Wizard to install:



*It is recommended that you should keep the **Install Additional Components** checkbox ticked to enable faster searches. Refer to section named [Installation of ediTariff Additional Components](#) within this Guide for more details.*


To continue with the installation, click **Next**.

The screen below will appear with the default installation folder for ediTariff:



The path entered here identifies where ediTariff is to be installed. It's generally recommended that you should accept the default path. However, any other location may be entered.

For example, **CargoWise One** is installed to `\\myserver\enterprise` so in the box provided, type in the following path: `\\myserver\ediTariff`

Alternatively, you can click the Browse  button and select a folder from an Explorer-like dialog box.

Refer to section named **Using Folder Browser** within this Guide for further details.

Once you have nominated the installation folder, click *Install* and the installation will begin.

## 6 Installation of Additional Components

**ediTariff** comes with an additional component called *Fast Search* that enables much faster searches through **ediTariff** databases. The *Fast Search* component requires **Microsoft .NET Framework v.2.0**.

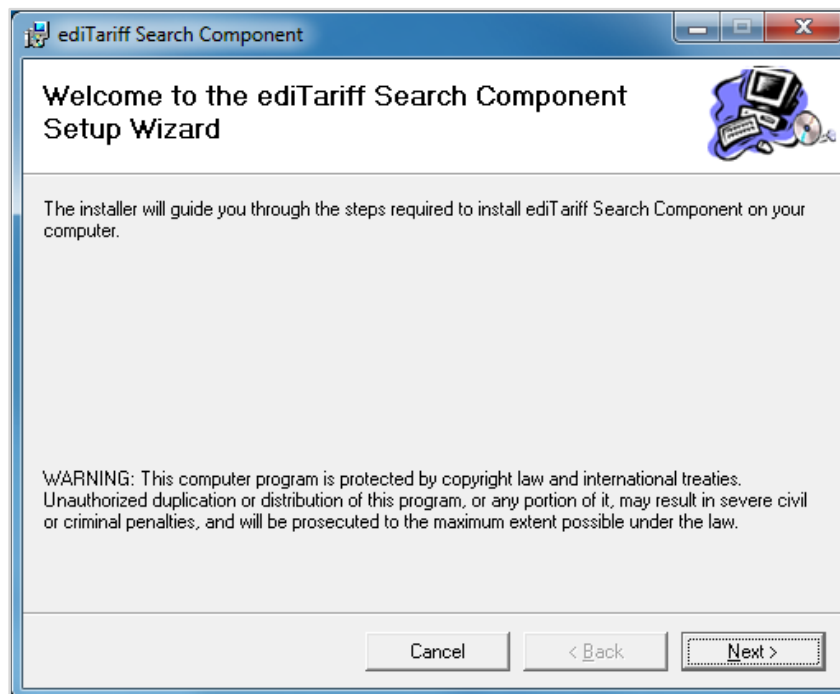
*Note: If you are running Windows XP or Vista it is likely that this is already installed.*

*Alternatively follow the instructions in the [Installation of Microsoft Framework v.2.0](#) section of this Guide to install it.*

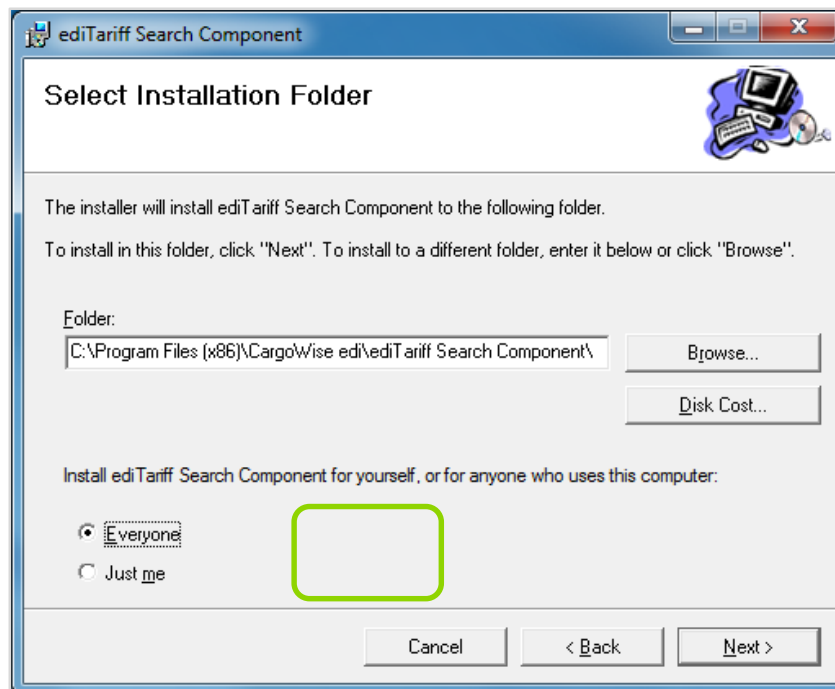
### 6.1 Installation of ediTariff Search Component


If you opted to *Install ediTariff's additional components*, the **ediTariff Search Component Setup Wizard** will automatically start once the installation of **ediTariff** files has completed.

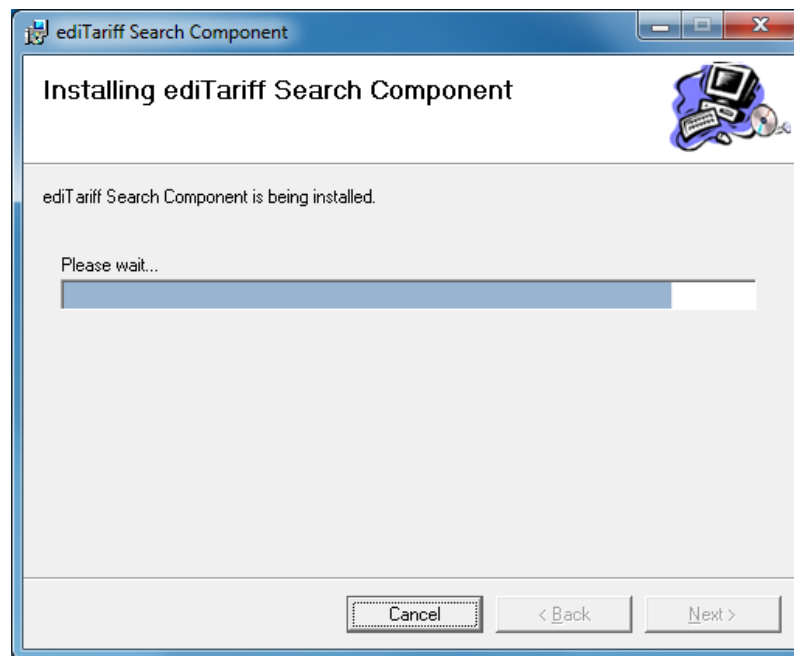
1. On the screen below, click **Next**.



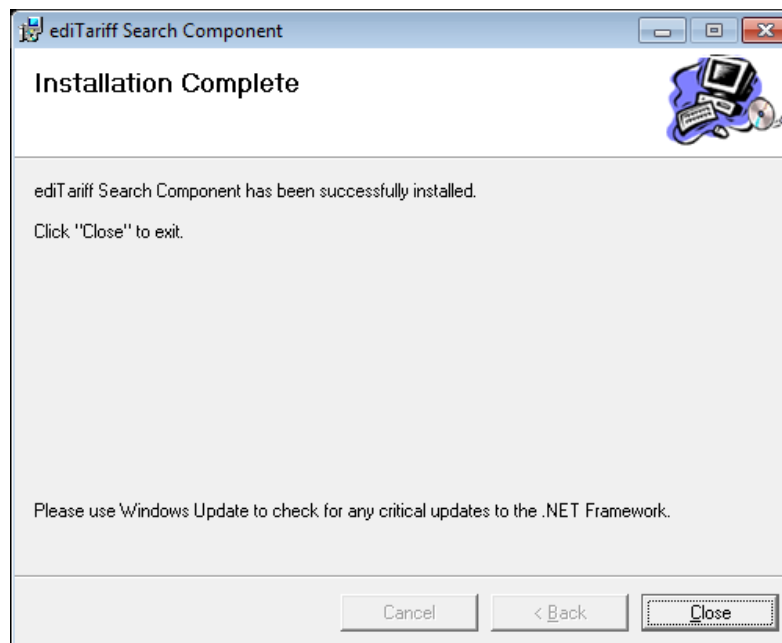
2. The next step identifies which folders to install the **ediTariff Search Component** to.



- If you wish to change the installation folder, type the desired path in the **Folder** box or use the **Browse**  button to select the installation folder.
  - If installation is being done on your own machine click **Next**.
  - If you share your machine with other people and you want to install the additional components for all users, select **Everyone**.
3. The installation will begin and you will see its progress on the screen below.



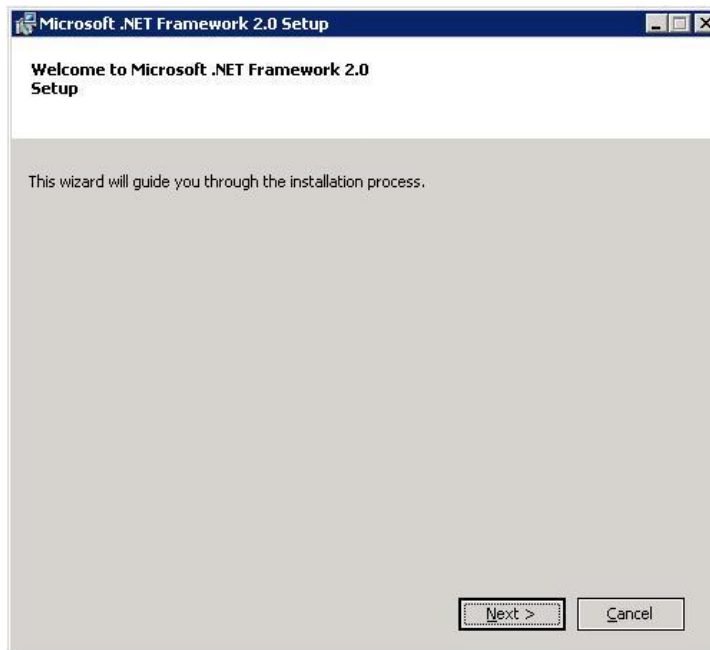
4. When finished, the window below will display. Click **Close** to exit the installer.



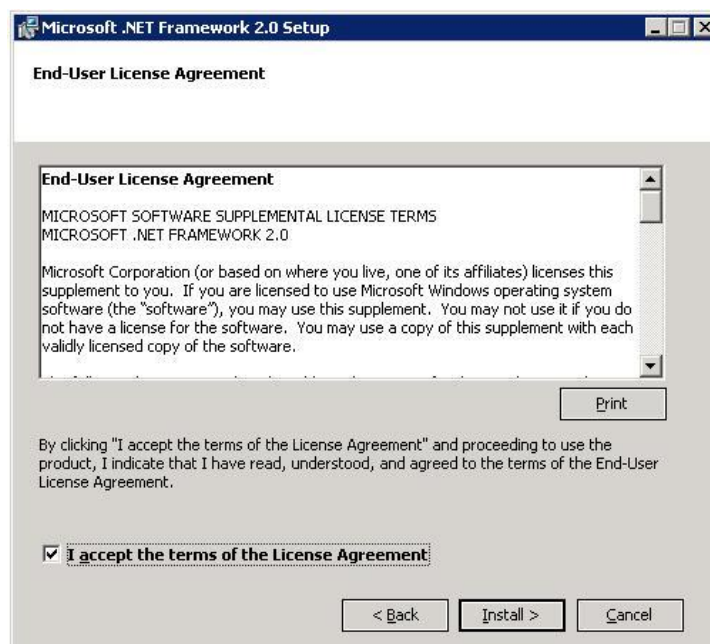
## 6.2 Installation of Microsoft .NET Framework v.2.0

If you opted to install the ediTariff additional components and **Microsoft .NET Framework v.2.0** is not found on your machine, the ediTariff installer will attempt to install it as it is required by the **ediTariff Fast Search Component**.

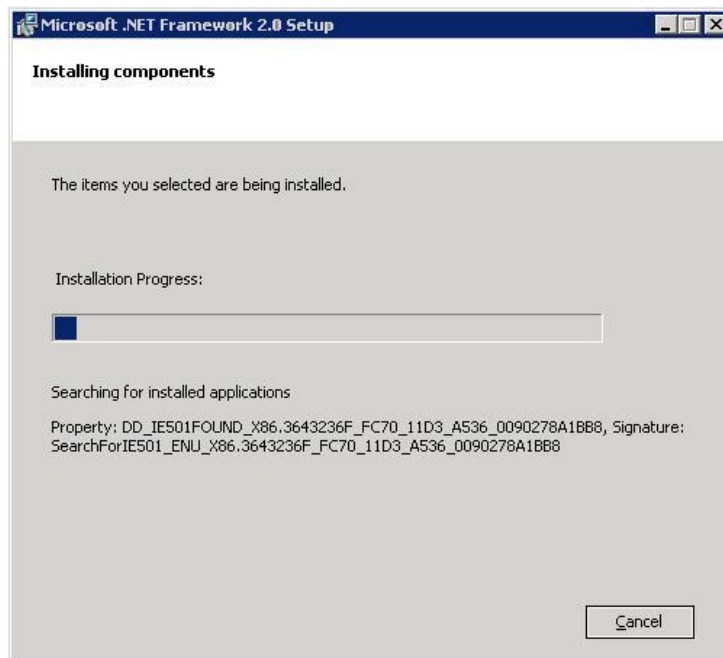
1. The **Microsoft.NET installer** might take a few seconds to start up and will then display the screen below. Click **Next** to continue.




2. The License Agreement screen will appear. Tick *I accept the terms of the License Agreement* and click **Next** to continue.

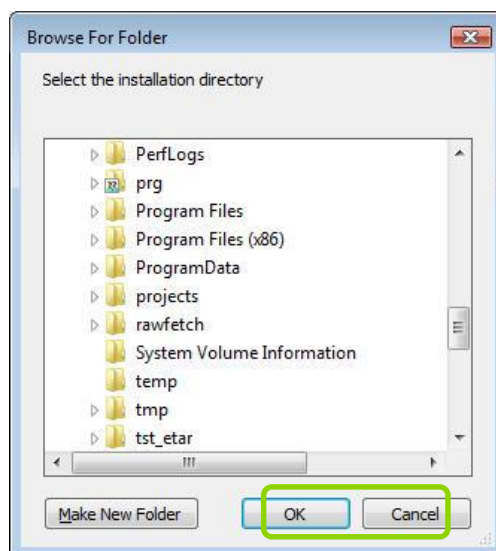


- The installation will begin and its progress will be shown on the screen below.



## 7 Using Folder Browser

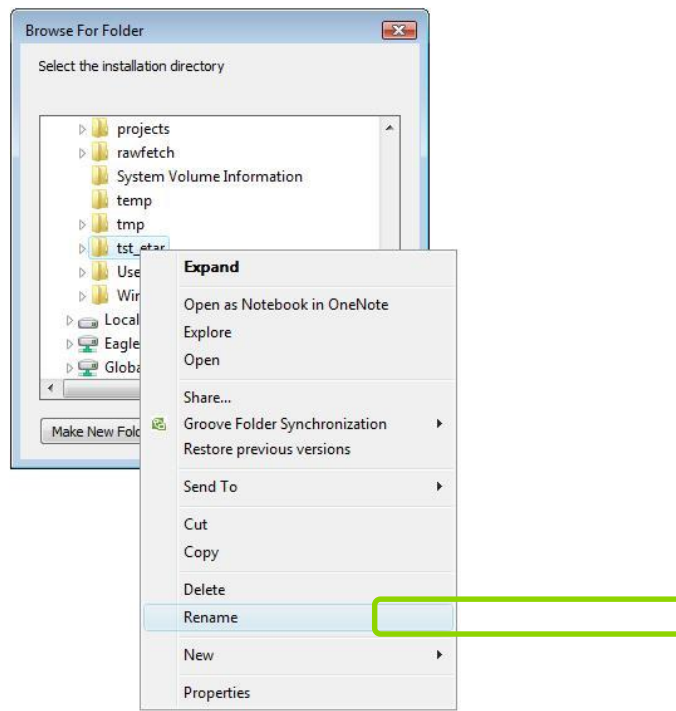
When you're prompted to type in the path to a folder, you can click the Browse  button and select a folder by using the **Browse for Folder** dialog box. It shows folders as an expandable tree and behaves similar to Windows Explorer.



To create a folder, click the *Make New Folder* button and enter the desired folder name.



To rename a folder, right-click it, select **Rename** from the context menu, type the name and press Enter.



## 8 Solving Common Problems

There are a number of common problems that may occur whilst using ediTariff.

*Please refer to the [How To Troubleshoot ediTariff Errors](#) document for more information. This is also published within the **WiseLearning** section of the WiseGlobal website.*

### Contact Information

**Support:** Hit the F1 key from anywhere within **CargoWise One** to raise an eRequest.